



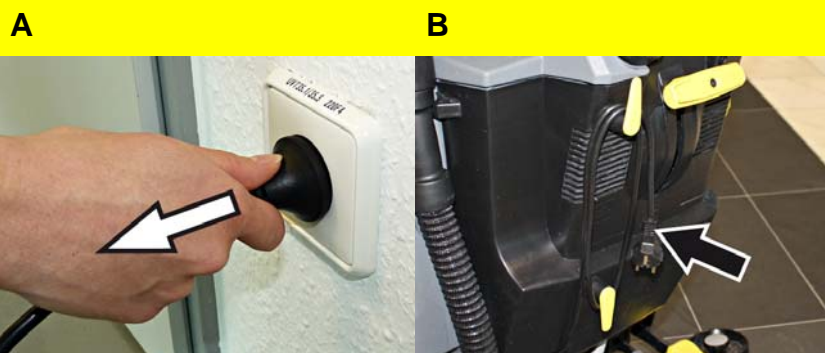
### Warning

These are only brief instructions! Please read and comply with these instructions prior to using or servicing your appliance.

The non-compliance of the operating and safety instructions may lead to damages of the appliance and to dangers for the operator and other persons.

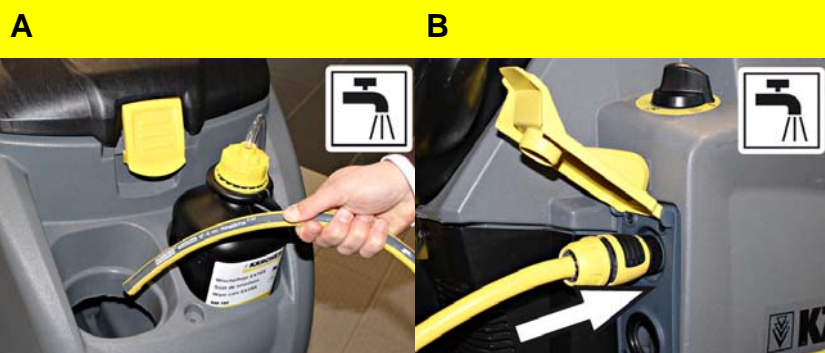
## Start up

### 1



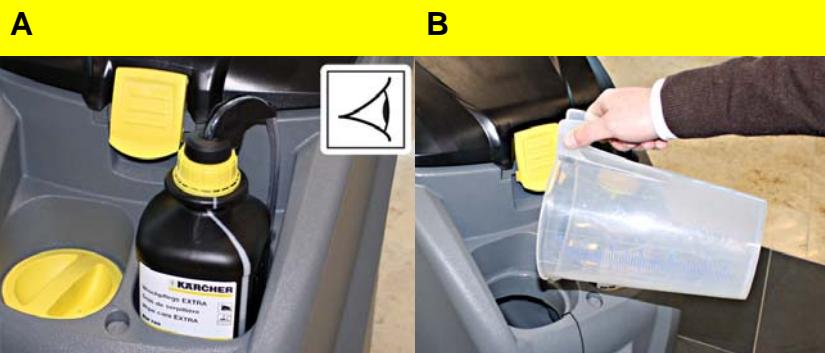
- A Unplug the charger from the mains.
- B Wind the mains cable around the cable holders.

### 2



- A Open the lock of the fresh water reservoir. Fill fresh water (maximum 60 °C) until the lower edge of the filling nozzle. Close the lock of the fresh water reservoir.
- or
- B Connect the hose to the automatic filling system and open the water supply (max. 60 °C, max. 5 bars).

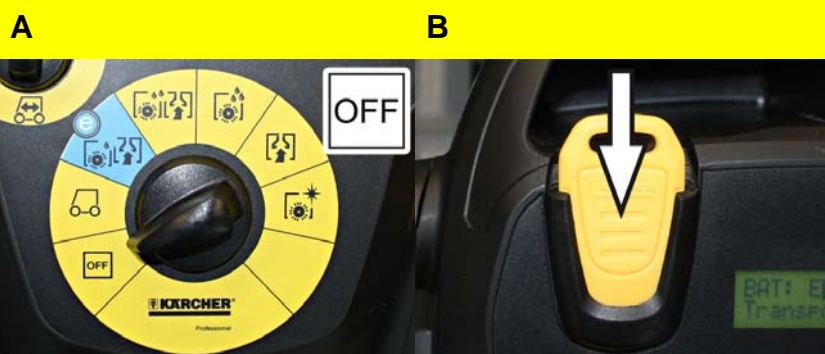
### 3



- Model with dosing equipment "Dose"**
- A Place the detergent bottle into the holder. Close the bottle lid. Insert the suction hose of the dosaging equipment into the bottle.
- Model without dosing equipment "Dose"**
- B Add the detergent to the fresh water reservoir.

## Operation

### 1

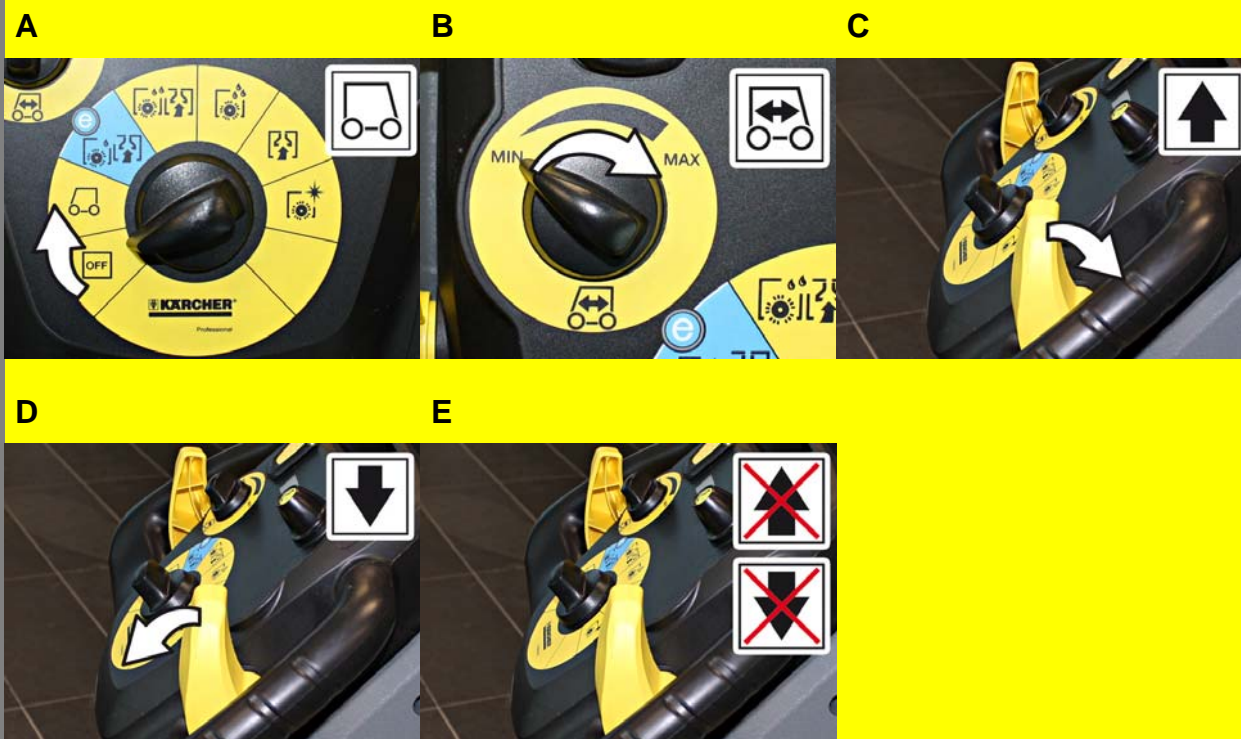


### Starting the machine

- A Turn the program selection switch to "OFF".
- B Plug in the Intelligent Key.

## Operation

### 2



#### Driving

- A Turn the programme selector switch to position 1 "Transport mode".
- B First select the driving speed at the rotary knob.

#### Drive forward

- C Press the driving lever to the front.  
Stop the machine: Release driving lever.

#### Reverse drive

- D Press the driving lever to the rear.  
Stop the machine: Release driving lever.

#### Stop

- E Release driving lever.

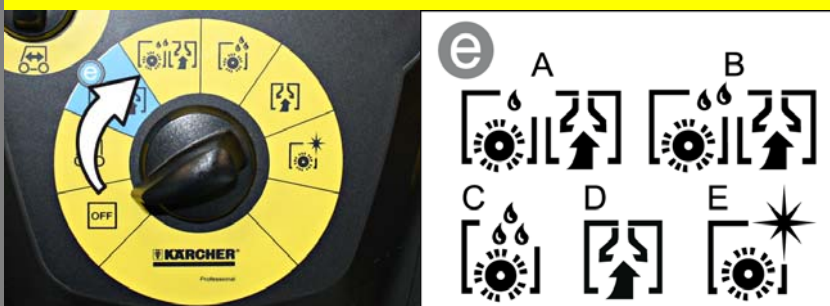
### 3



#### Adjusting the brush contact pressure

- A Arrest the lever in the desired position.  
Upper position: higher contact pressure  
Lower position: reduced contact pressure

### 4



#### Cleaning Programs

- A **Ecoefficiency mode**  
Wet clean the floor and vacuum up dirt water.
- B **Normal mode**  
Wet clean the floor and vacuum up dirt water.
- C **Intense mode**  
Wet clean the floor and allow the detergent to react.
- D **Vacuum mode**  
Vacuum the wastewater.
- E **Polishing mode**  
Polishing the floor without the application of liquid.

### 5



#### Setting the water quantity

- A Adjust the water quantity using the regulating button according to the dirt on the floor covering.

### 6



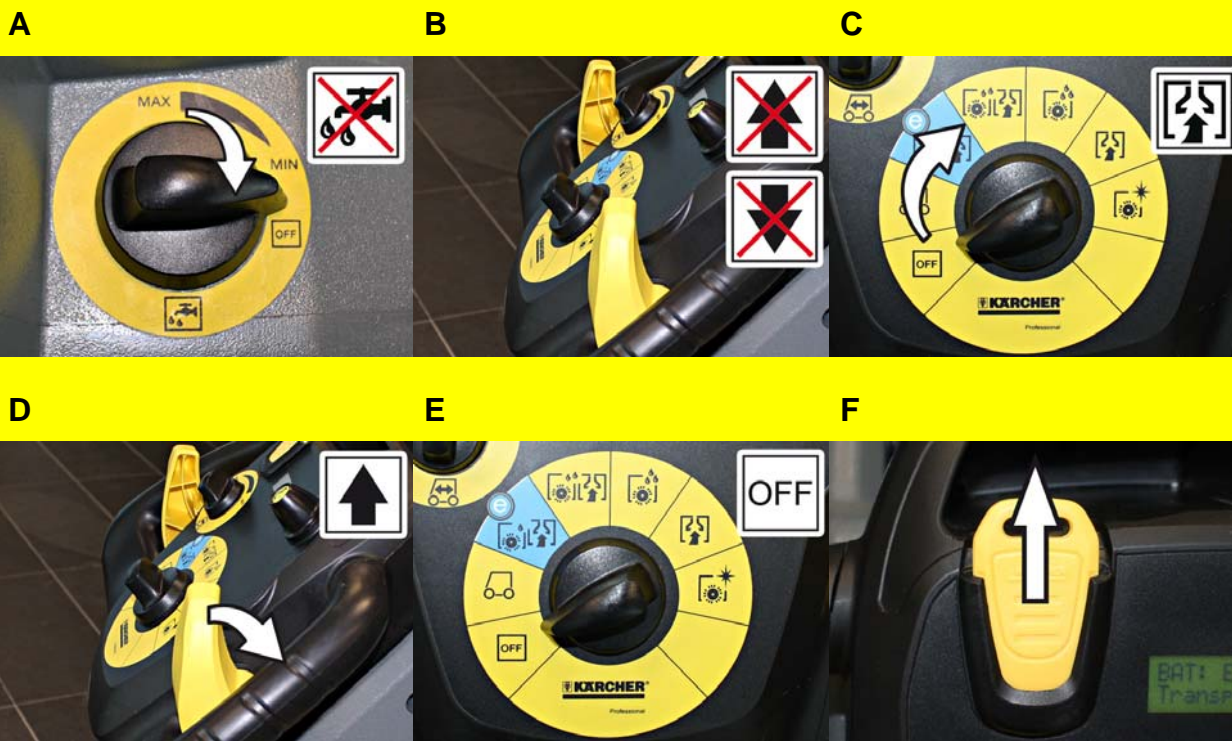
#### Info button

Use the Info button to select the menu items and do the settings.

- A Turning the button to the right/left scrolls through the menus forward/ backward.  
The selected setting gets accepted by pressing the button.

## Finish operation

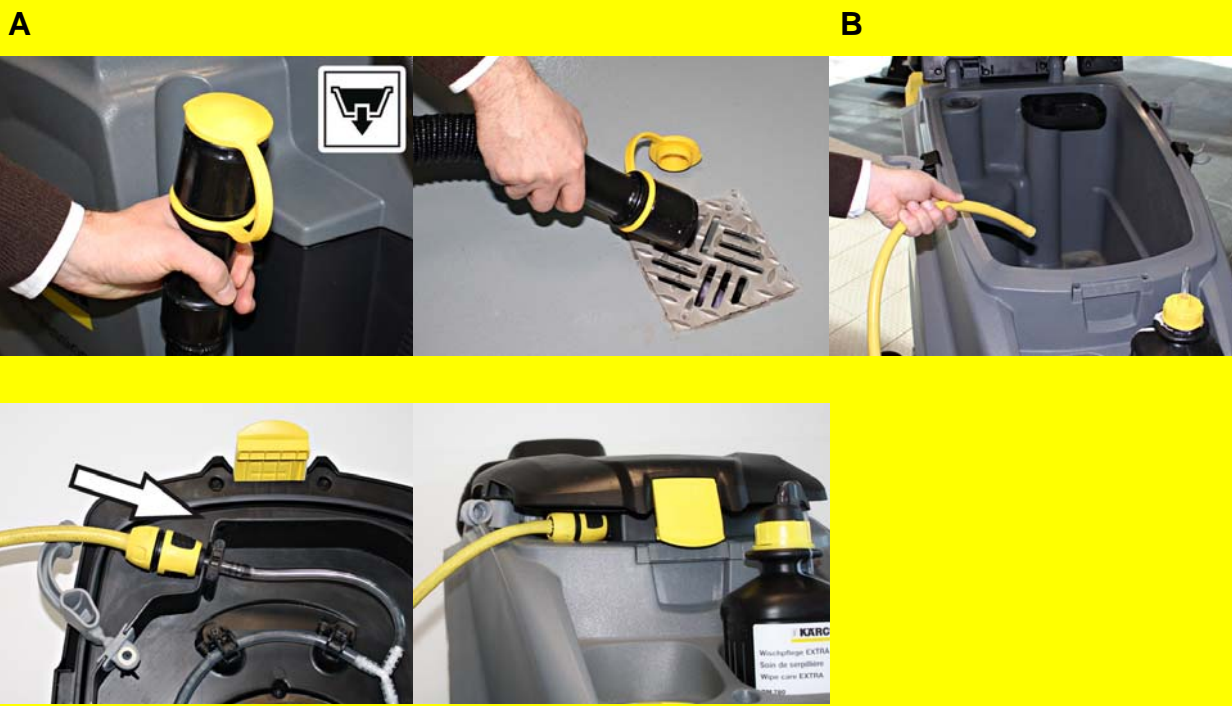
### 1



#### Turn off the appliance

- A Close the regulatory button for setting the water quantity.
- B Release driving lever.
- C Set the program selection switch to suction or vacuuming.
- D Briefly drive forward and suck of the remaining water.
- E Turn the program selection switch to "OFF".
- F Remove the Intelligent Key.

### 2



#### Emptying the Dirt Water Reservoir

##### ⚠ Warning

Please observe the local provisions regarding the wastewater treatment.

- A Take the water discharge hose from the support and lower above a suited collection device.
- B Rinse the wastewater reservoir with clean water or with the rinsing system for the wastewater reservoir (option). Take the water discharge hose from the support and lower above a suited collection device. Leave the cover open to let it dry.

### 3



#### Emptying the Fresh Water Tank

##### ⚠ Warning

Please observe the local provisions regarding the wastewater treatment.

- A Loosen the lid for emptying the fresh water - do not remove it fully. Drain water. To rinse the fresh water reservoir, remove the cover with the seal completely and remove the fresh water filter.

### 4



#### Empty waste container (only with R cleaning head)

- A Remove bulk waste container and empty it.

### 5



#### Charging battery

- A Charge battery, if required. Insert the plug of the connecting cable into the socket.

## Maintenance and care

daily

monthly

Kärcher Customer Service

1



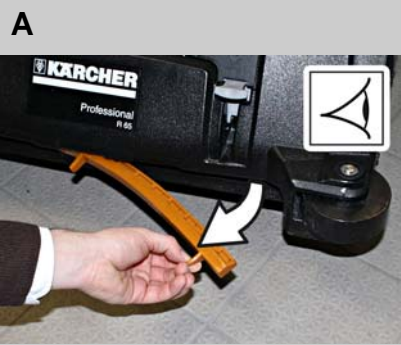
- A Remove the coarse dirt sieve from the wastewater reservoir and clean it.
- B Check the fluff filter, clean if required.

2



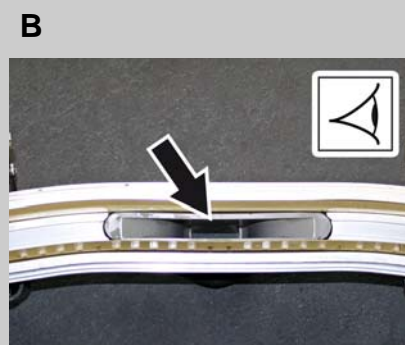
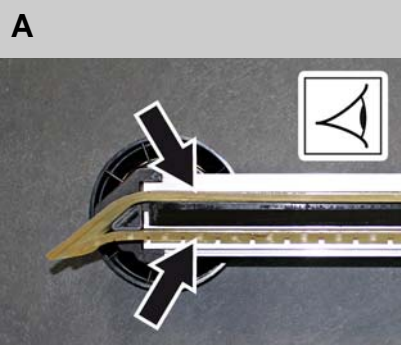
- ⚠ **Warning**  
Please observe the local provisions regarding the wastewater treatment.
- A Loosen the lid for emptying the fresh water - do not remove it fully. Drain water.
- B To rinse the fresh water reservoir, remove the cover with the seal completely and remove the fresh water filter. Check fresh water filter; clean if required.

3



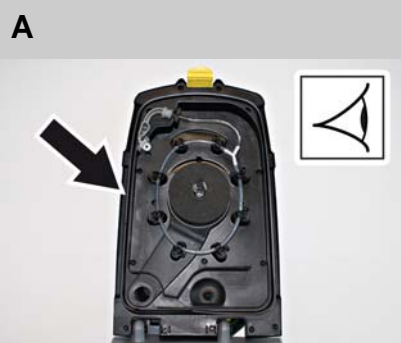
- A Remove the water distribution strip from the cleaning head and clean water canal (only R cleaning head).

4



- A Clean the vacuum lips on the vacuum bar, turn or replace if required.
- B Clean the suction channel.

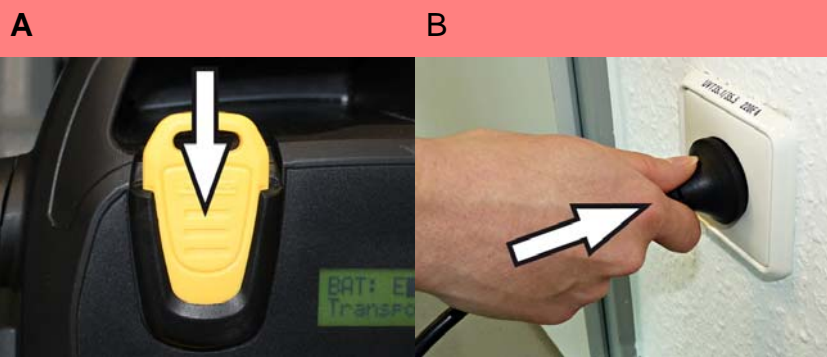
5



- A Clean the seals between dirt water reservoir and cover and check for tightness, replace if required.

## Troubleshooting

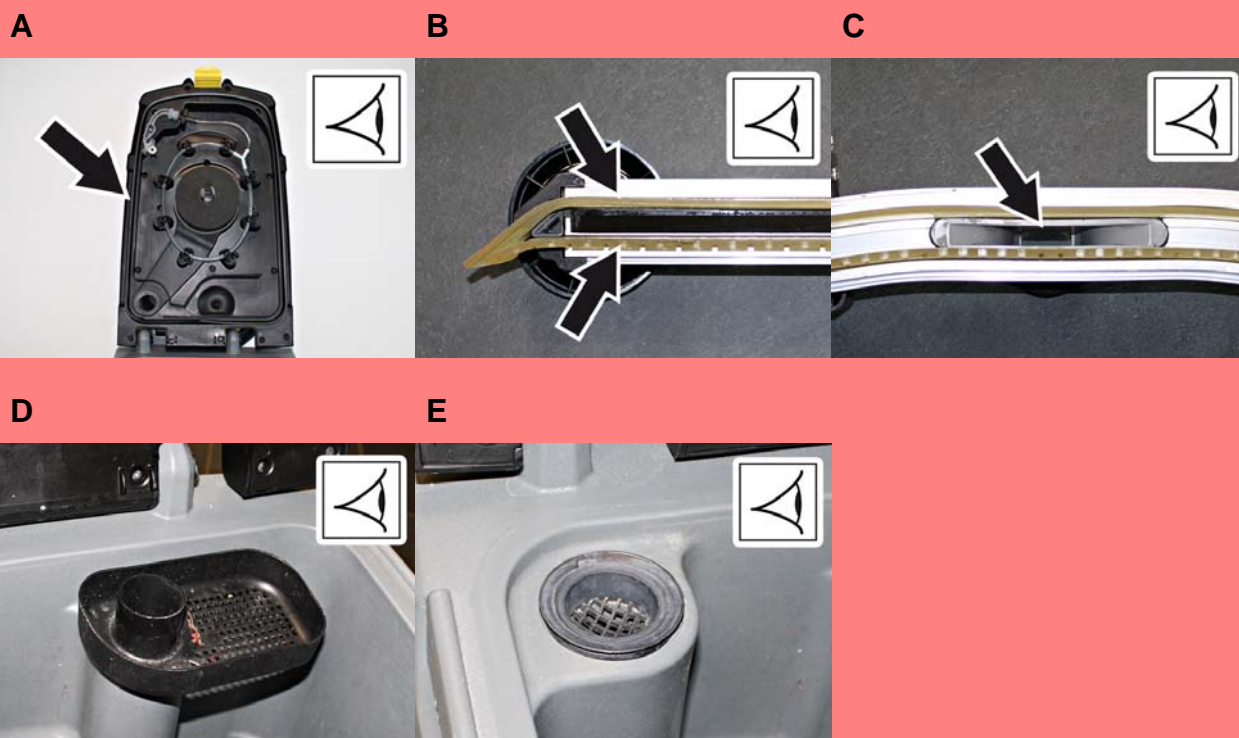
### 1



Appliance cannot be started

- A Stand-by. Plug in the Intelligent Key. Turn the program selection switch to the desired programme.
- B Battery depleted. Charge battery.

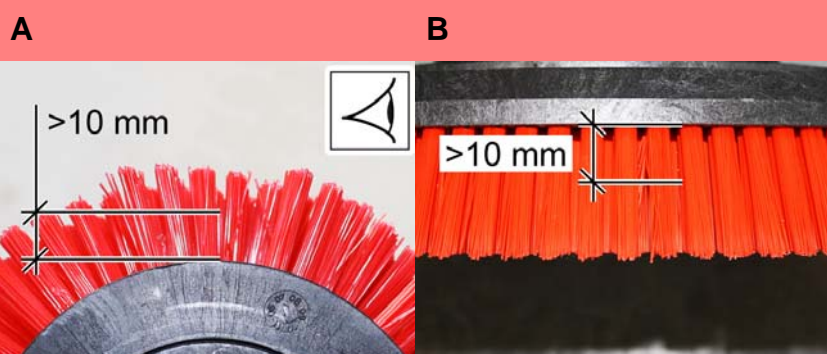
### 2



Insufficient vacuum performance

- A Clean the seals between dirt water reservoir and cover and check for tightness, replace if required.
- B Clean the vacuum lips on the vacuum bar, turn or replace if required.
- C Check suction hose for blockages; clean if required. Check connection between suction hose and suction bar and suction hose and wastewater tank.
- D Remove the coarse dirt sieve from the wastewater reservoir and clean it.
- E Check the fluff filter, clean if required.
- F Check the setting of the vacuum bar.
- G Check if the cover on the dirt water discharge hose is closed
- H Empty wastewater tank (See "End operation", item 2).

### 3



Insufficient cleaning result

- A Check brush for wear and tear and clean it. Check the brushes for wear (bristle length at least 10 mm), replace if required.

### 4



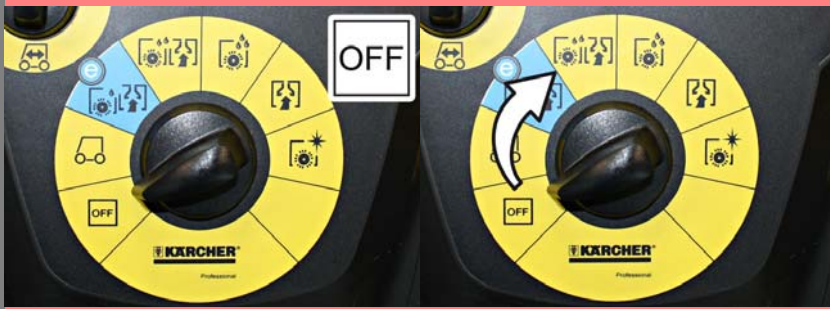
Insufficient water quantity

- A Check fresh water level, refill tank if necessary.
- B Increase the water volume on the regulating knob for water volume.
- C Unscrew the lock of the fresh water reservoir. Remove and clean the fresh water filter. Insert the filter and screw in the lock.
- D Remove the water distribution strip from the cleaning head and clean water canal (only R cleaning head).

## Troubleshooting

### 5

A



Brushes do not turn

- A If over-current switch in the electronics system has been triggered, turn programme selection switch to "OFF". Afterwards, set it back to the desired programme.
- B Check the brushes for blockage due to foreign particles, remove them if found.

### 6

A

B



Do not add detergents

- A Increase the water volume to activate the dosing pump.
- B Check level of detergent solution in the fresh water tank; refill, if required.