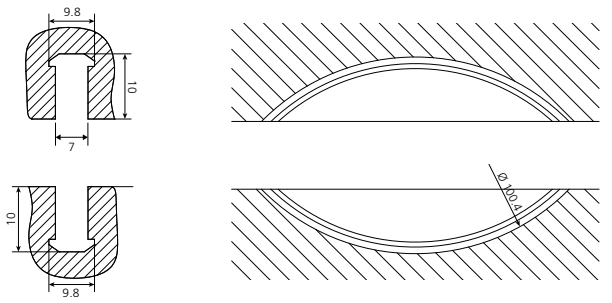
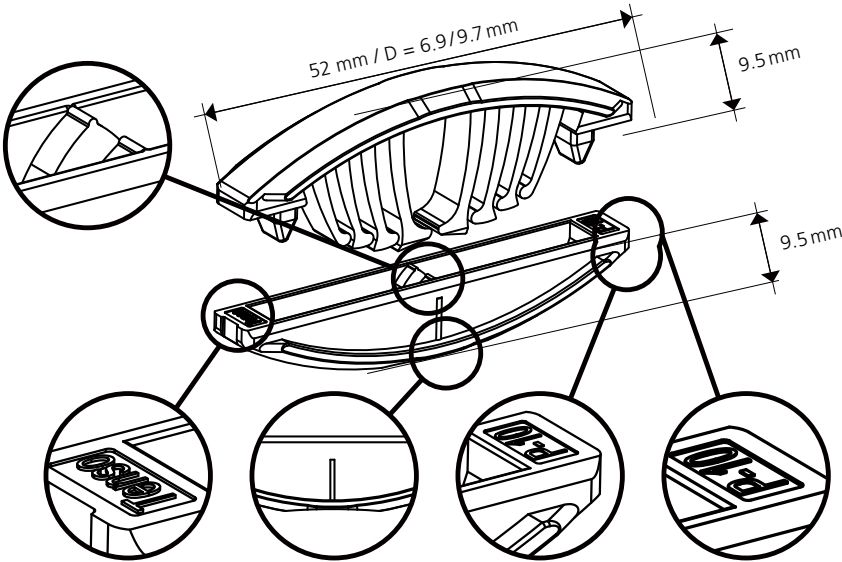
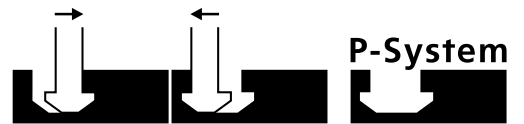


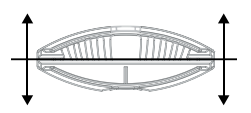
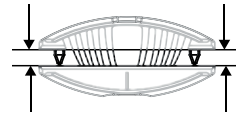
Tenso P-10

Pat. pend.



Anzugskraft / Tensile Force: 100 N

Haltekraft / Retention Force: 180 N



Hinweis: Die Zug- bzw. Scherfestigkeit ist abhängig vom Klebstoff / Tip: The tensile or shear strength depends on the used adhesiv

Immer in Verbindung mit Klebstoff verwenden

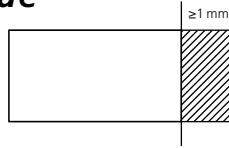
Hinweis:

- Trockener Zusammenbau mit **Bisco P-10** möglich
- Bei Arbeiten mit 12 mm bzw. 13 mm dicken Materialien muss mindestens eine 1 mm Kante verwendet werden

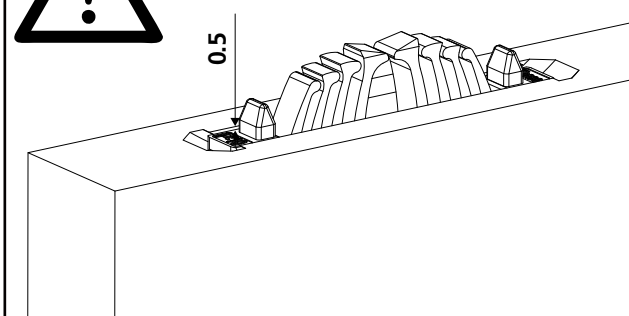
Always use in combination with glue

Tip:

- Test assembly with **Bisco P-10** possible
- When working with 12 mm or 13 mm thick materials at least one 1mm edge must be used



Wichtig: Für eine maximale Spannkraft!
Important: For maximum clamping force!

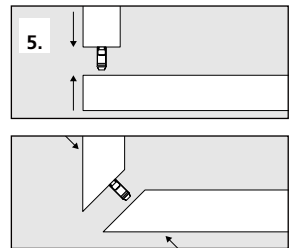
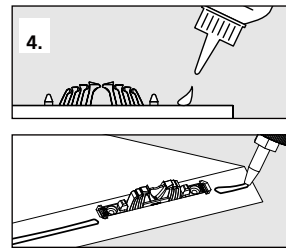
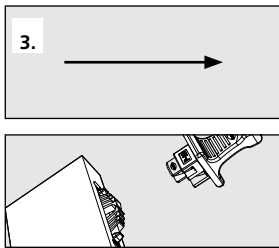
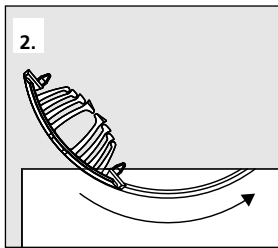
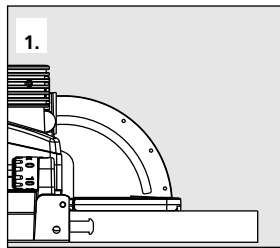
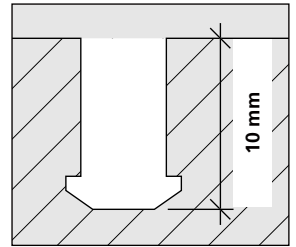
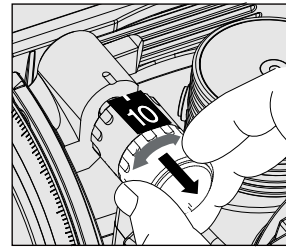


Zeta P2

Art.Nr. 101402

Art.Nr. 132140 (Diamant)
DP, Ø 100.4 x 7 x 22 mm

Art.Nr. 132141
HW, Ø 100.9 x 7 x 22 mm



Scharfe Fräser verwenden
Use sharp cutters

max. 30 min

Anwendungen / Applications

